

Silver measurement from Day 3

Please make another column in your data table and include the sample data shown below.

After collecting your mass from Day 3 on the next page, and subtracting the beaker, please enter your data to the Google form so I can compile a list of class data. The link to the Google form is posted on the unit J page on rangerchem.online.

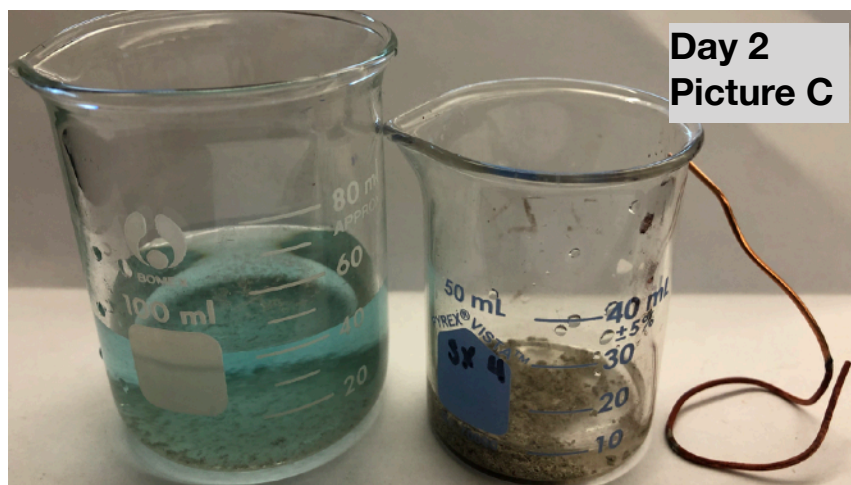
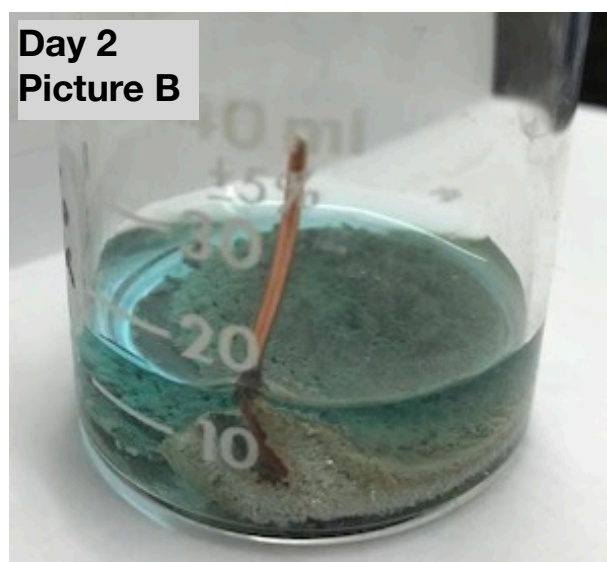
Find your beaker in the pictures on page 2, and the mass in the data tables by class period. Zoom in on the picture and please make observations about the color of your silver metal as directed at the bottom of page one of the lab protocol in Procedure step K. If you were absent on Friday, your beaker looked like Pictures A and B shown below before your partner(s) carried on.

Each group then separated and weighed the left over dried copper wire which you can get from your lab partner or on the class data table soon to be posted after each group sends in their data. Then the beakers and wire looked like picture C below. The blue copper(?) nitrate solution was discarded, and the smaller beaker with the washed silver metal crystals was set to dry. Beware, the beakers of one group each in period 3 and 4 were not dry. Process the data anyway, and we'll see how the numbers come out.

Period 4: Sophie Xu & Partner? Picture C shown below is your result after I separated the materials, and the weight of your leftover dried copper wire was 1.4747 g

We have Ms. Waterman to thank for measuring the masses on Wednesday of this week and reporting out to me on the phone. I even heard her tell the beakers to smile before she took the family photos!

LAD J1 - Stoichiometry of SR Rxn	
	sample data
mass of empty beaker	29.5743
mass of silver nitrate (g)	0.7670
mass of copper wire at start (g)	1.894
mass of copper wire after reaction (g)	1.744
mass of beaker with silver metal (g)	30.0802



LAD J1 – Stoichiometry of SR Rxn $\text{AgNO}_3 + \text{Cu}$

Period 1	Mass of Beaker with Silver metal (g)	Period 2	Mass of Beaker with Silver metal (g)	Period 3	Mass of Beaker with Silver metal (g)	Period 4	Mass of Beaker with Silver metal (g)
CR	39.5375	ID, SB, VG	29.9661	DL	38.4346	SX	30.0955
A&D	31.7324	KX, EC	29.8645	AM	30.1776	RF, SK	29.8390
MS	32.1228	BF, AT	38.3962	BK, AA, MC	31.0497	IW, RV	30.7053
Joseph&Nikki	30.0619	SE + AJ	29.3567	SK, TL	37.3162	SB	30.7028
DPK MM	30.9526	CH, EB, AK	30.1094	BR, TC	29.5041	Juliette,Dylan	29.6860
SS + EB	30.0888	JC, SK, VV	28.1330	JM	30.1481	James,Smrithi	45.9130
EM + SJ	31.4203	CM, SC, ES	39.1741	AB	30.1151	JB, RB	29.8185
Taveena	30.4402	Y, EH, EL	30.1412	SG	29.8170	Justin,Mansi,Jack	28.2360
CB HS	39.0157	AG	30.6985	SV, LH	31.5046	AR,MM,MO	30.1760
		SR, DD	30.8719	MR	32.8305	KP	29.6612

Day 3 Photos of all the beakers

